

Stone Soup Matching Game

Draw a line between the character in *Stone Soup* and the famous painting that inspired them.



Tomato Man

The Desperate Man
by Gustave
Courbet



Tall Lady

*Orphan Girl at the
Cemetery* by
Eugène Delacroix



Carrot Man

Snap the Whip by
Winslow Homer



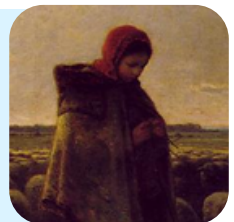
Nervous Boy

The Gleaners by
Jules Breton



Corn Girl

*Shepherdess with
her Flock* by
Jean-François
Millet



Onion Girl

*Return of the
Gleaner* by
Winslow Homer

